

Axion Haus LLC

LUXURY LIVING, ENGINEERED TO PERFECTION



GERMAN PRECISION -
YOUR SUSTAINABLE HOME OF THE FUTURE

GERMAN PRECISION - YOUR SUSTAINABLE HOME OF THE FUTURE

Your home should be more than just a place to live—it should be an investment in the future. We offer premium passive homes that combine German precision, cutting-edge technology, and a commitment to sustainability. Every detail is carefully designed to create a space that aligns perfectly with your needs.



YOUR DREAM HOME – THE PERFECT BLEND OF QUALITY AND SUSTAINABILITY

German Quality: Every element of our homes, from design to construction, meets the highest standards of German precision.

Prestige and Style: Italian tiles, German-engineered windows, and modern interiors make your home an inspiration.

Passive Design: Save up to 90% on energy for heating and cooling, depending on location and applied technologies.

Sustainability and Comfort: A home designed with care for the environment and your well-being.

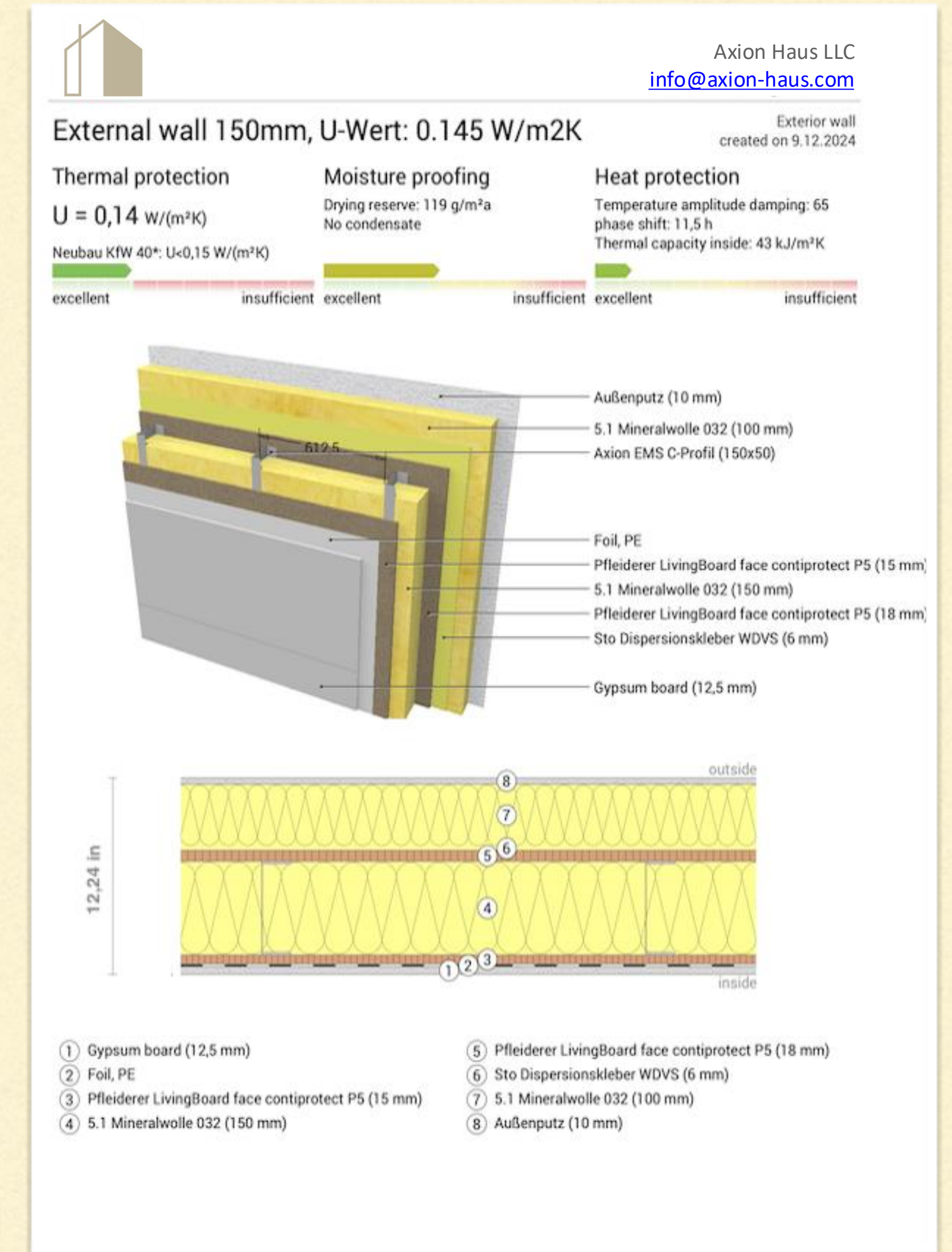
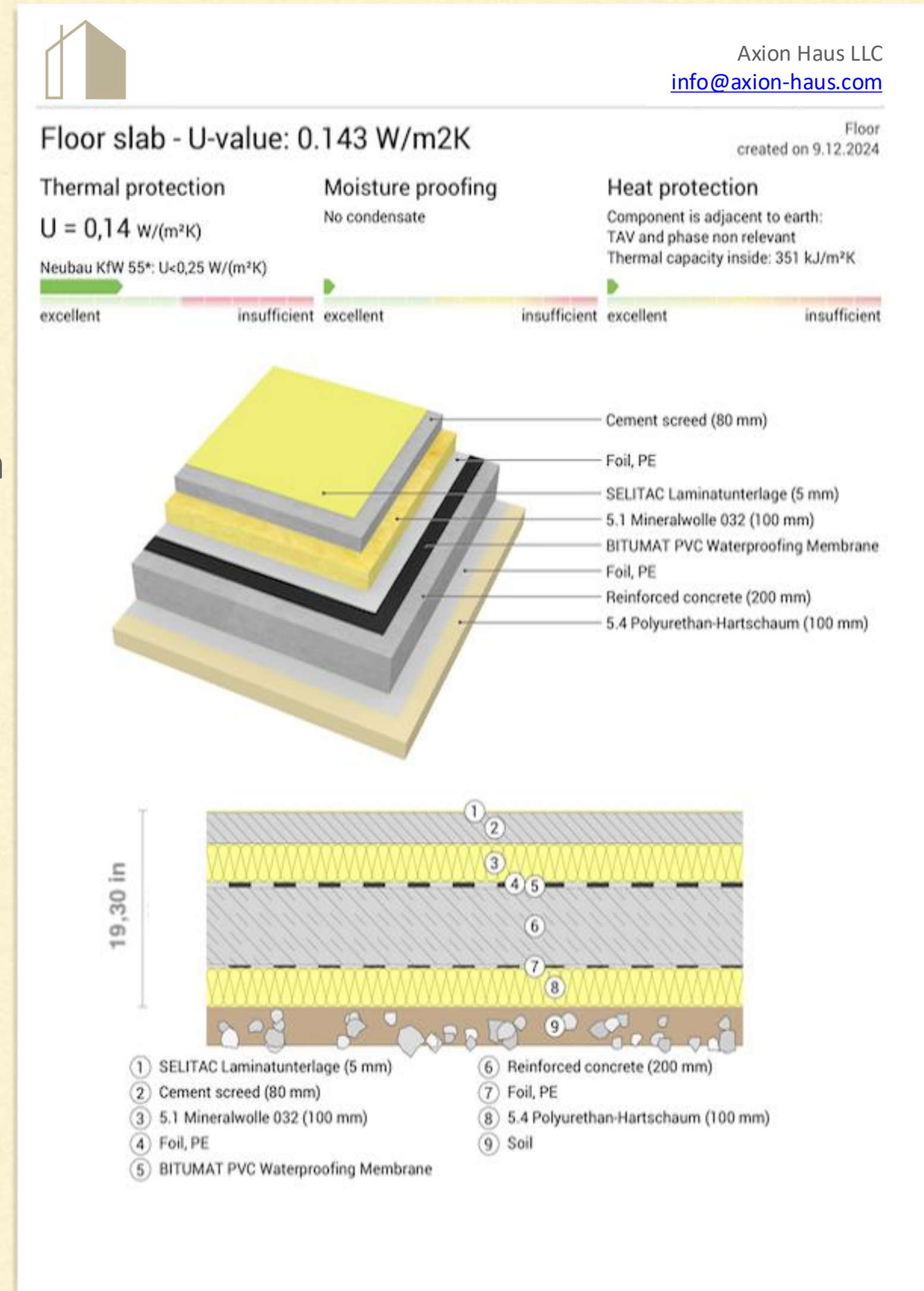


A SOLID FOUNDATION FOR YOUR COMFORT

Foundations: Insulated foundation slabs protect against energy loss and moisture.

Walls: Multi-layered structures made of premium materials, including mineral wool, PUR foam, and reflective coatings like TRINO.

Aesthetic Options: Choose from finishes such as mineral plasters, wood panels, or composite cladding.



DURABILITY AND ACOUSTIC COMFORT AT EVERY LEVEL

Roofs: Thermo-reflective coatings prevent overheating in summer, while PUR foam and mineral wool ensure year-round comfort.

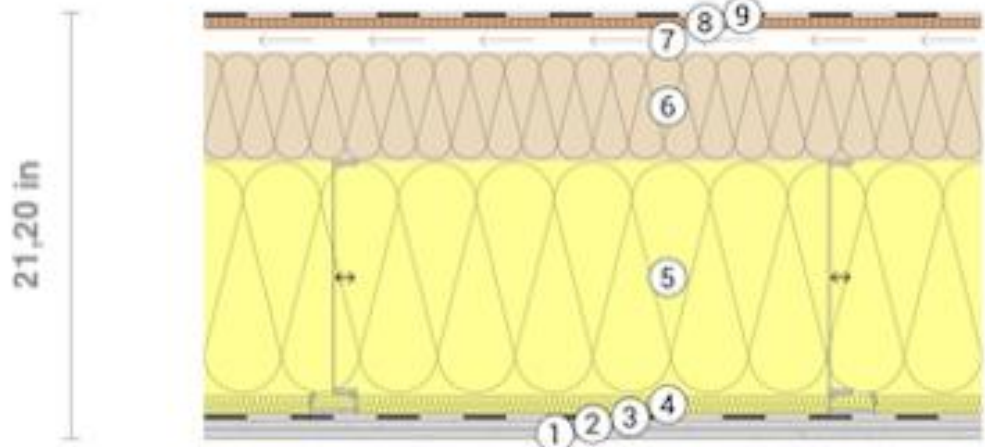
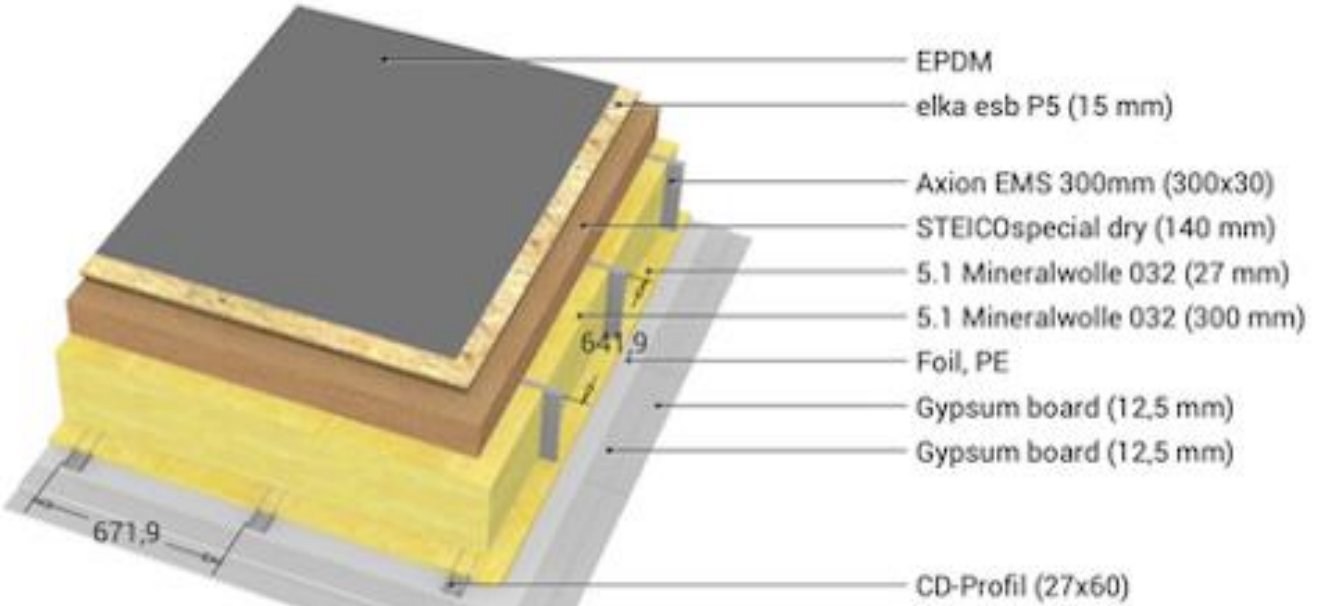
Ceilings: Lewis metal decking by Reppel offers superior acoustic insulation, fire resistance, and moisture protection.



Axion Haus LLC
info@axion-haus.com

Flat roof, U-value: 0.145 W/m²K

Flat roof
created on 9.12.2024



- | | | |
|--------------------------|---------------------------------|---------------------------------|
| ① Gypsum board (12,5 mm) | ④ 5.1 Mineralwolle 032 (27 mm) | ⑦ Rear ventilated level (30 mm) |
| ② Gypsum board (12,5 mm) | ⑤ 5.1 Mineralwolle 032 (300 mm) | ⑧ elka esb P5 (15 mm) |
| ③ Foil, PE | ⑥ STEICOspecial dry (140 mm) | ⑨ EPDM |

<-> Layers marked by arrows are perpendicular to the main axis.

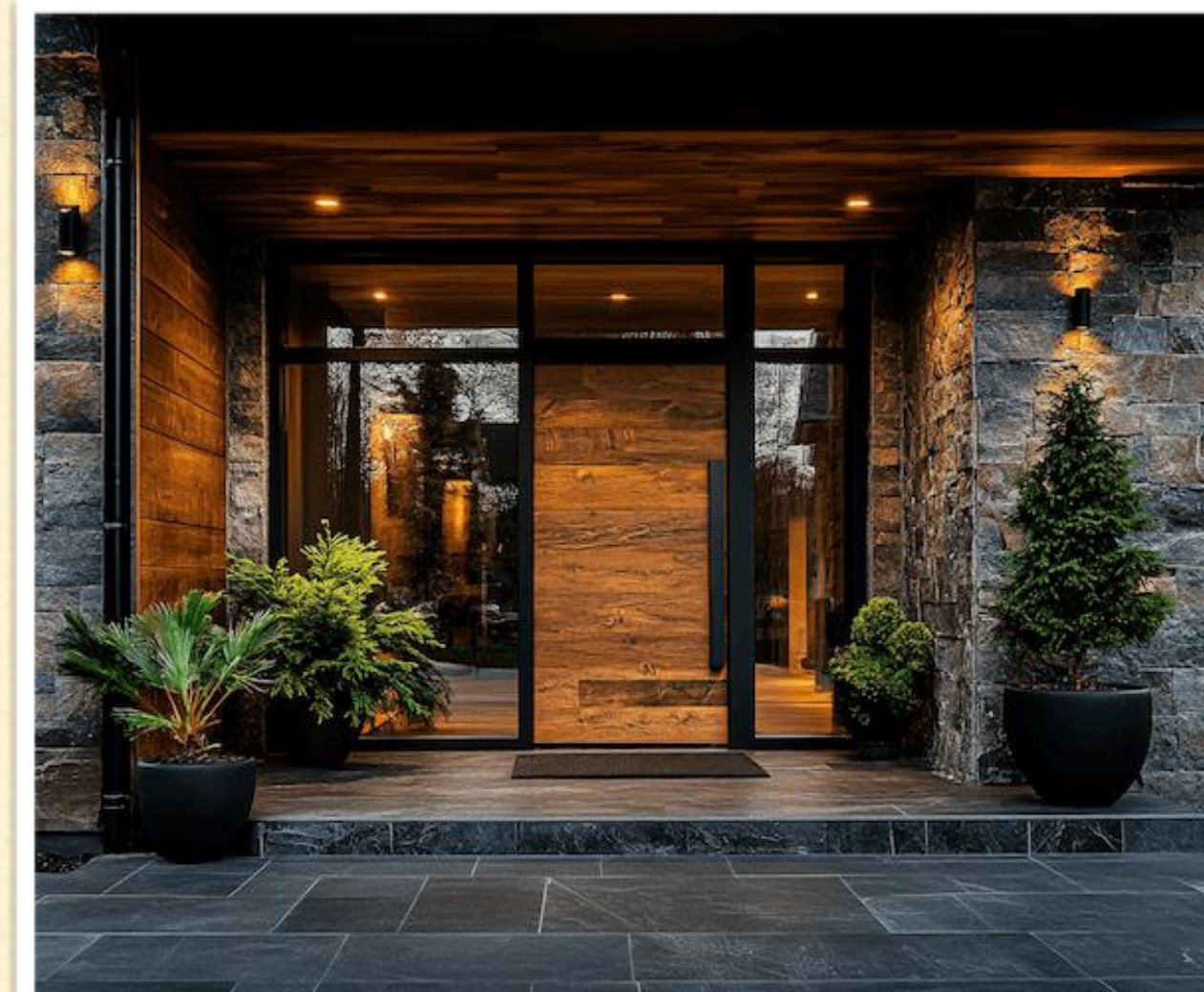
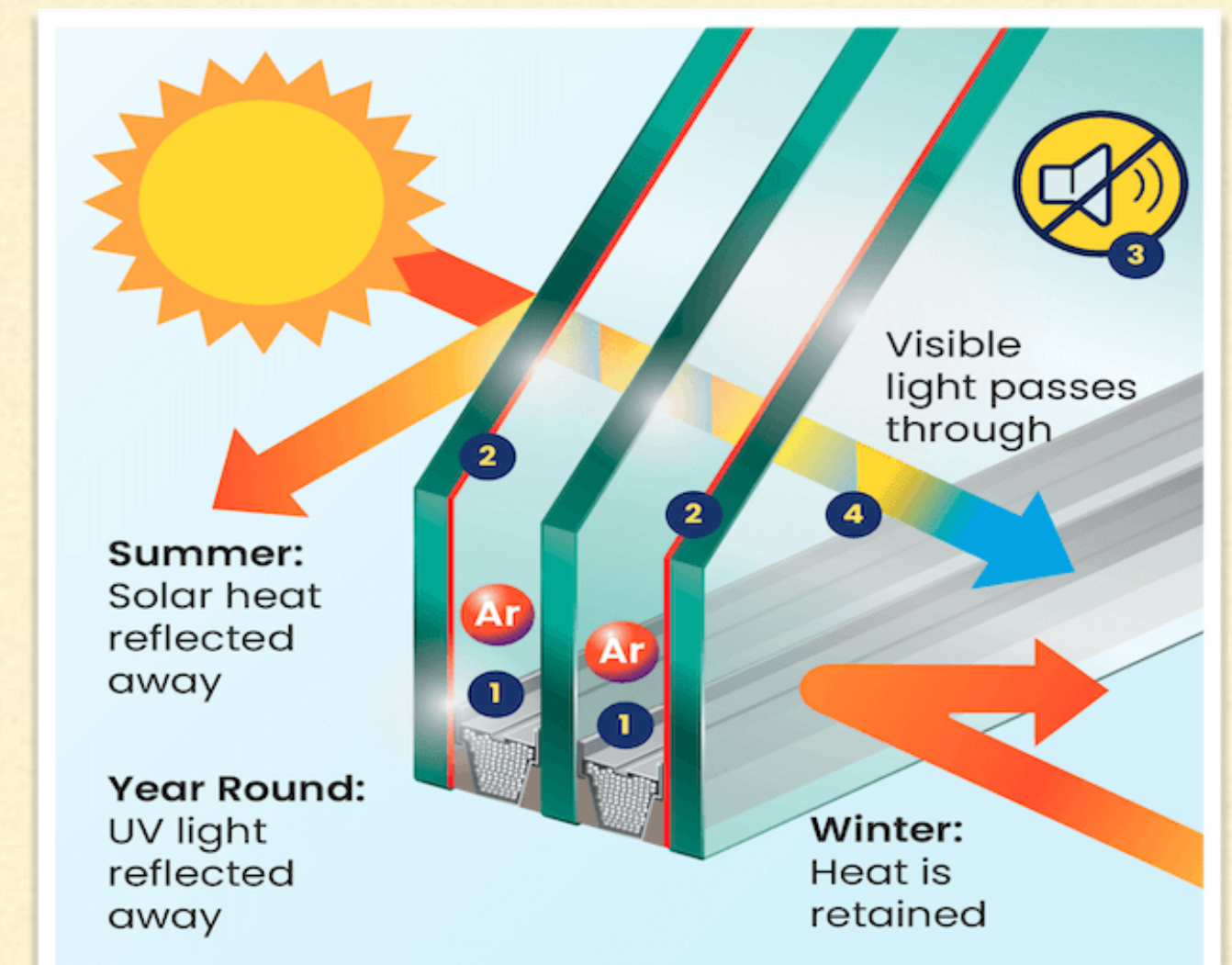


Axion Haus LLC
LUXURY LIVING, ENGINEERED TO PERFECTION

SEALED FOR EFFICIENCY, DESIGNED FOR SECURITY

Windows: Triple-glazed PVC and aluminum windows, installed according to German RAL standards, provide excellent thermal insulation ($U \leq 0.7 \text{ W/m}^2\text{K}$).

Doors: Solid wooden and aluminum entry doors with acoustic and thermal insulation, enhanced by anti-burglary features.



YOUR HOME, YOUR RULES

Finishes: Italian tiles, hardwood floors, and eco-friendly materials elevate every room.

Smart Home: Loxone systems let you control lighting, temperature, and devices from your smartphone.

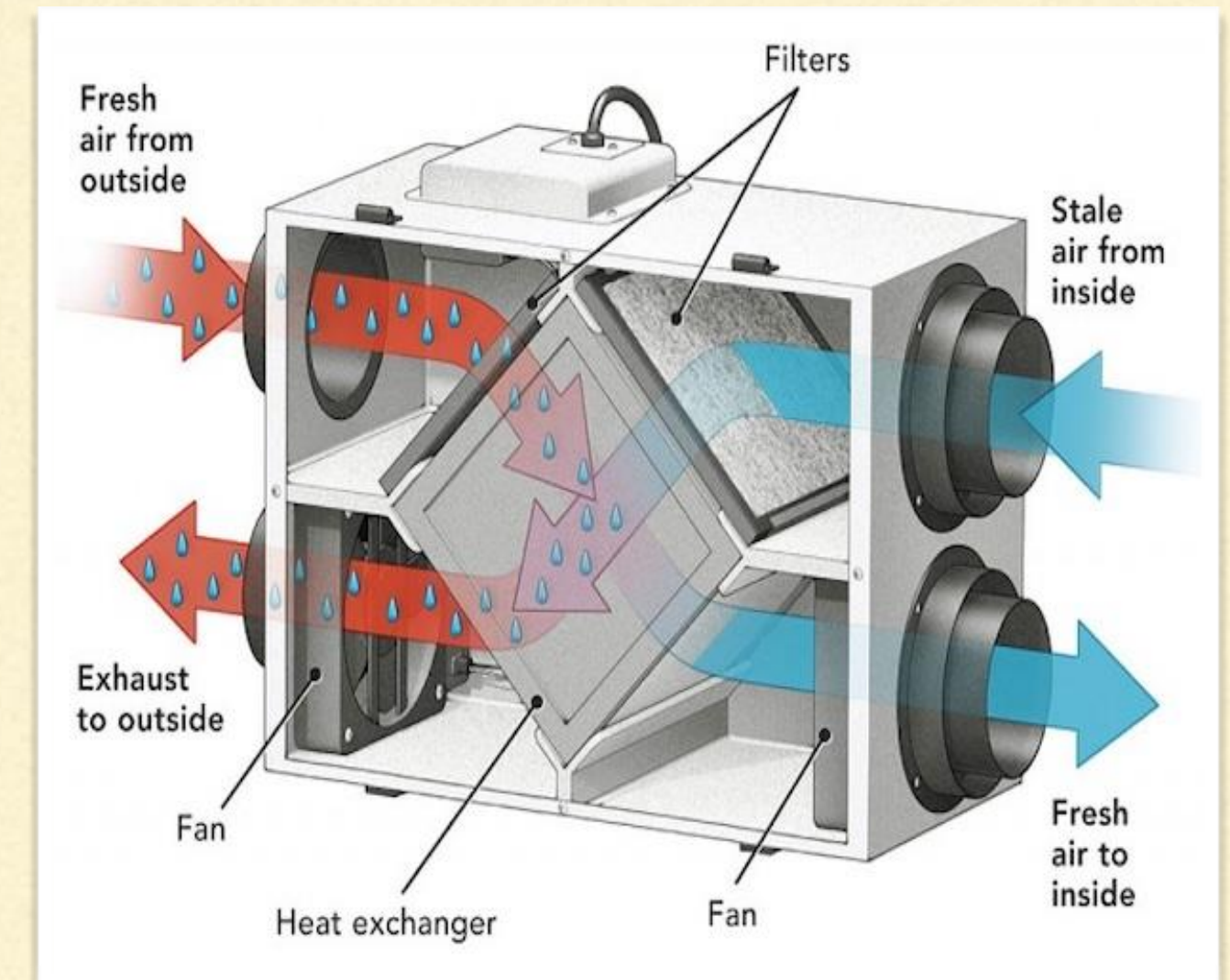


A PASSIVE HOME – AN INVESTMENT IN THE FUTURE

Ventilation with Heat Recovery: Enjoy fresh air with minimal energy use.

Photovoltaics: Optional solar panels and energy storage systems reduce costs and CO₂ emissions.

Savings: Passive homes reduce heating and cooling energy demands by up to 90%, depending on location and design.



YOUR HOME, YOUR CHOICE

Invest in a home that combines German quality, cutting-edge technology, and a commitment to sustainability. Let us create a space that's beautiful, energy-efficient, and designed for the future.



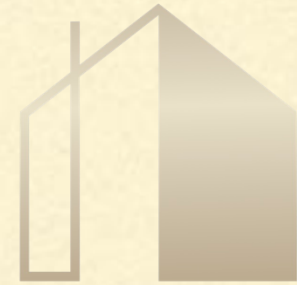








CONTACT



Axion Haus LLC

LUXURY LIVING, ENGINEERED TO PERFECTION

Contact Information:

Email: info@axion-haus.com

Phone: +49 178 730 4995

Website: www.axion-haus.com

